

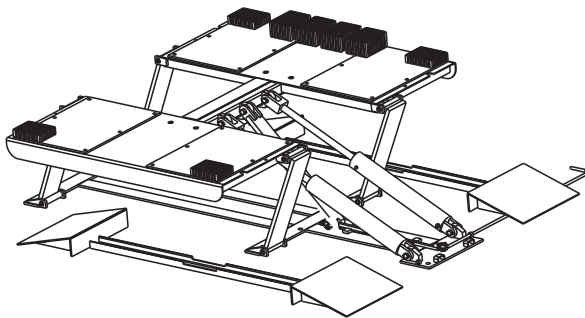


VLXS7

Low Rise Car Lift

Capacity 7000 lbs.

(Maximum 1750 lbs. per pad)

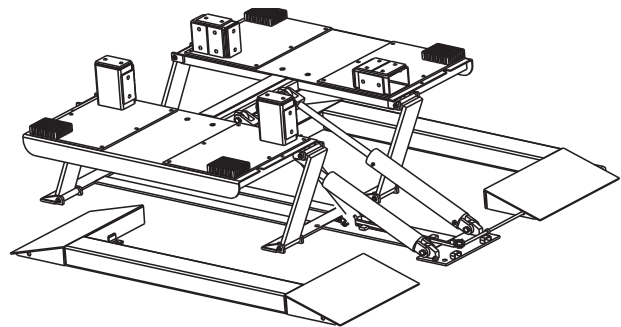


VLXS10

Low Rise Car Lift

Capacity 10,000 lbs.

(Maximum 2500 lbs. per pad)



IMPORTANT: When ordering parts or requesting service always give exact model and power unit serial number. Model number is shown on nameplate attached to power unit column. Power unit serial number is located on side of power unit.

OWNERS RECORD
Complete information
at right and keep in
a safe place.

Date Installed _____

Installed in Bay # _____

Power Unit Serial # _____

Power Unit Model # _____

Lift Serial # _____

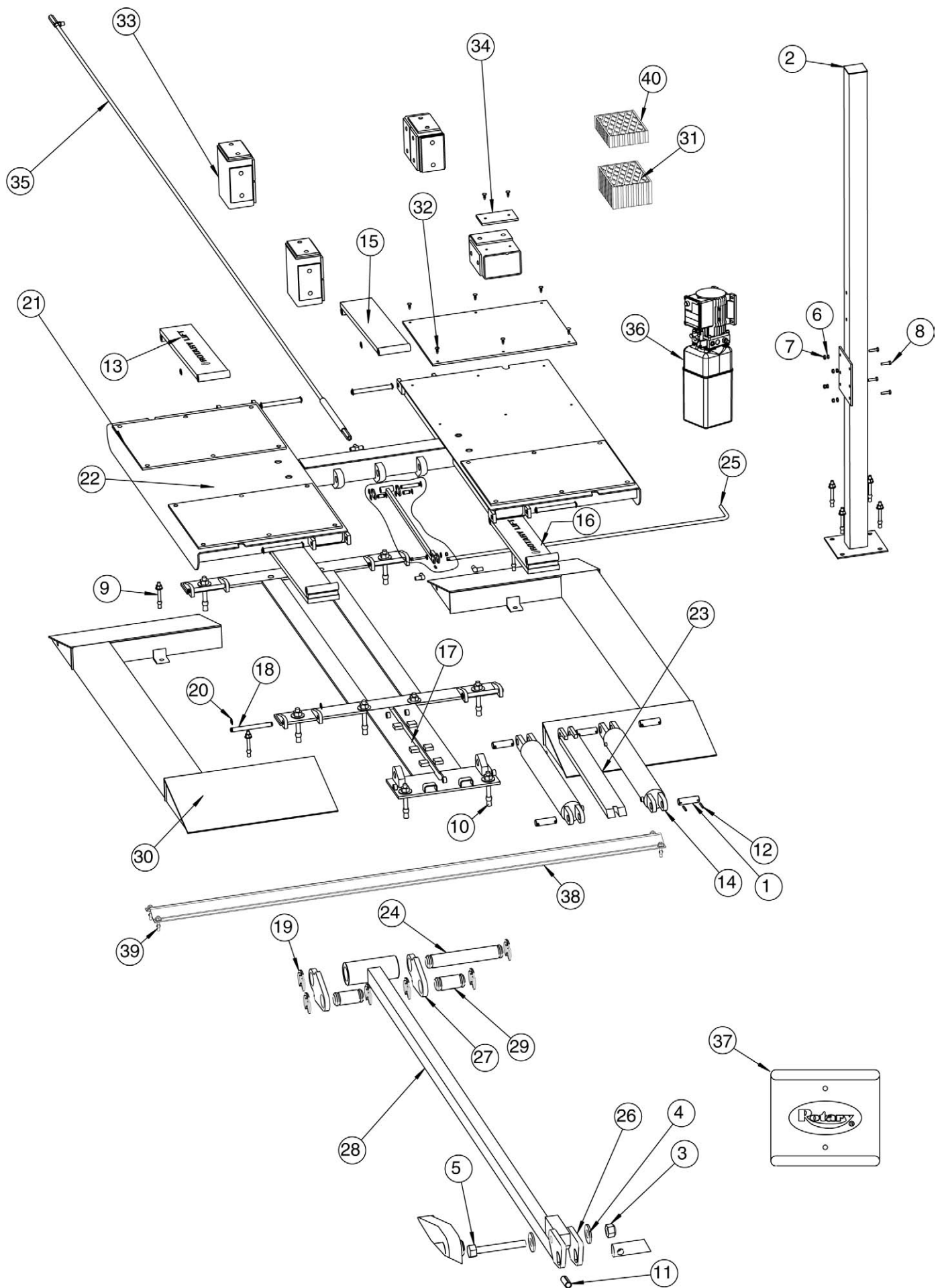
Lift Model # _____

NOTE: For replacement parts -See your nearest Rotary Parts Distributor.

PB 2-5-6

Rev. C 10/28/2005

1.	CYLINDER PIN	021420
2.	7' POWER UNIT MOUNT	021704
3.	1/4"-20 NYLON INSERT HEX NUT	911403
4.	1/4" FLAT WASHER	911405
5.	1/4"-20 HHCS X 2" LG.	911481
6.	5/16"-18 HEX NUT	911701
7.	5/16"-18 NYLON INSERT HEX NUT	911703
8.	5/16"-18 HHCS X 1-1/4 LG.	911751
9.	1/2" X 4-1/4" ANCHOR BOLT	912728
10.	3/4" X 5-1/2" ANCHOR BOLT	913828
11.	SPRING PIN	0970609
12.	ROLL PIN X 1-1/2"	991060
13.	ROTARY 18" DECAL	991540
14.	CYLINDER	992305
15.	REAR LEG WELDMENT	1010100
16.	FRONT LEG WELDMENT	1010101
17.	BASE WELDMENT	1010106
18.	LEG PIN	1010116
19.	1/2" KLIP-RING	1010117
20.	5/8" KLIP-RING	1010118
21.	RUBBER PAD	1010400
22.	TOP STRUCTURE	1010401
23.	LOCKING LEG	1010500
24.	LATCH PIN	1010505
25.	LATCH RELEASE HANDLE	1010509
26.	LATCH RELEASE KEYED PIVOT	1010510
27.	LATCH RELEASE PIVOT	1010511
28.	LATCH RELEASE WELDMENT	1010513
29.	LATCH PIN	1010514
30.	RAMP WELDMENT	
	VLXS10 (Shown)	1010600
	VLXS7 (Not Shown)	1010605
31.	3" RUBBER ADAPTER (VLXS7 Only)	FJ2428
32.	CHRISTMAS TREE FASTENER	1010906
33.	ADAPTER ASSEMBLY (VLXS10 Only)	1010907
34.	RUBBER PAD (VLXS10 Only)	1010908
35.	HYDRAULIC KIT	1010909
36.	115V 60Hz POWER UNIT	P1083
37.	WHEEL SPOTTING DISH KIT	1010912
38.	HOSE GUARD	021730
39.	HOSE GUARD ANCHOR	991345
40.	1-1/2" RUBBER ADAPTER (VLXS10 Only)	FJ2427



Date	Rev.	Description of Change
06-10-05	-	New Product Launch
09-08-05	A	Update cover to show that holes were removed from base, moved Rotary decal to rear leg (item #13), added Hose Guard (item #38 & 39), added 1-1/2" Rubber Adapters (item #40)
09-27-05	B	Added VLXS7 information
10-28-05	C	Updated power unit information

Rotary World Headquarters

2700 Lanier Drive
Madison, IN 47250, USA
www.rotarylif.com

North America Contact Information

Tech. Support: p 800.445.5438
f 800.578.5438
e userlink@rotarylif.com
Sales: p 800.640.5438
f 800.578.5438
e userlink@rotarylif.com

World Wide Contact Information

World Headquarters/USA: 1.812.273.1622
Canada: 1.905.812.9920
European Headquarters/Germany: +49.771.9233.0
United Kingdom: +44.178.747.7711
Australasia: +60.3.7660.0285
Latin America / Caribbean: +54.3488.431.608
Middle East / Africa: 1.812.273.1622



A DOVER COMPANY

